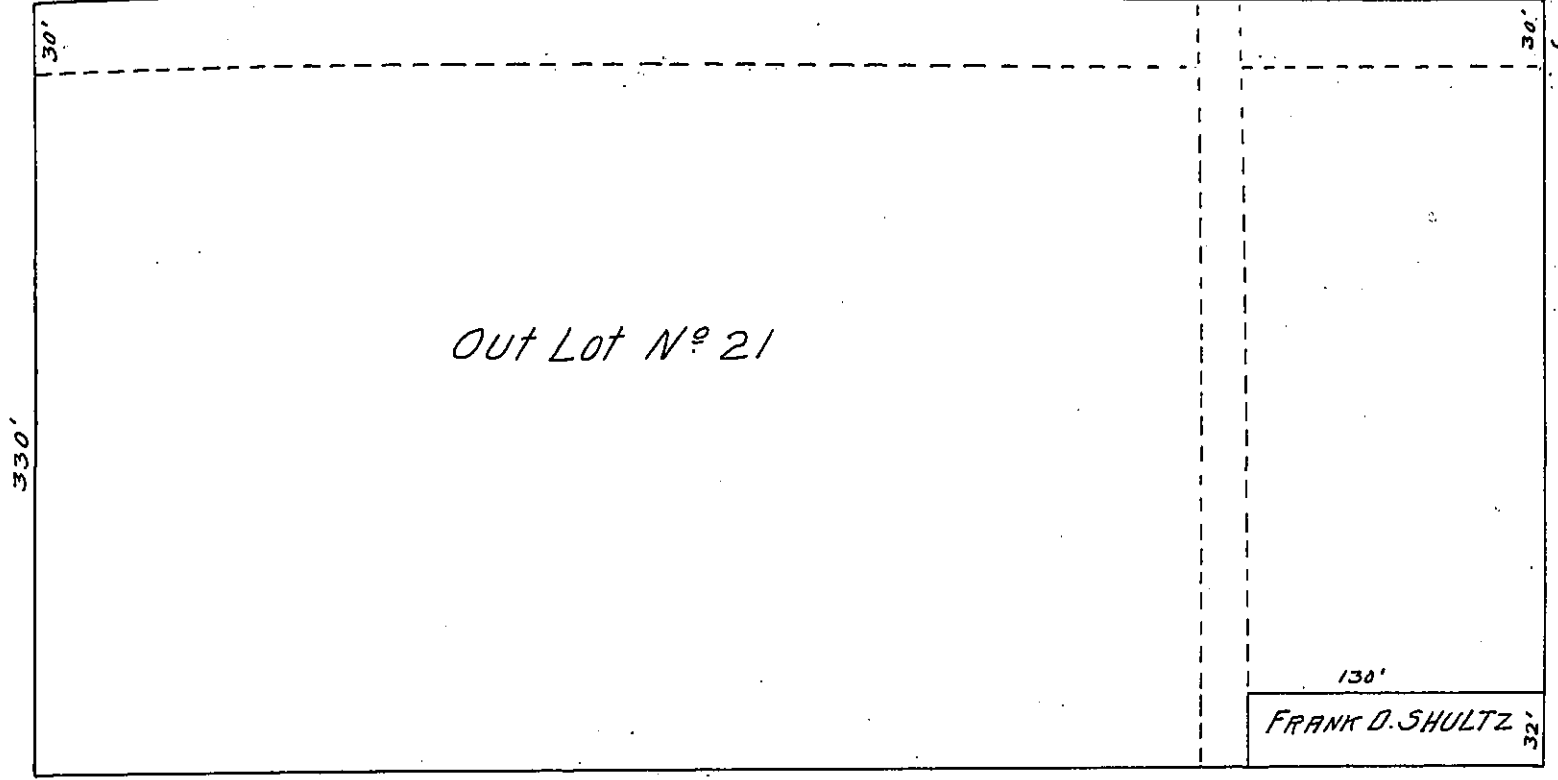


25th

Original line of Out Lot N^o 21



26th 5th

Draft of Out Lot N^o 21. Situate in the City and County of Erie.

Showing a part or subdivision in the South East corner. Containing 130 by 32 feet. owned by Frank D. Shultz. of the City of Erie.

Constructed May 22nd 1905. by

J. Sutton Wall.

To Hon. Isaac B. Brown

Chief Draftsman

Secretary of Internal Affairs.

IN TESTIMONY that the above is a copy of the original remaining on file in the Department of Internal Affairs of Pennsylvania, made conformably to an Act of Assembly approved the 16th day of February, 1833, I have hereunto set my Hand and caused the Seal of said Department to be affixed at Harrisburg, this twenty second day of March 1907.

Isaac B. Brown
Secretary of Internal Affairs.